

Urbanscape® Green Cubes

November 2017

Description

Urbanscape® Green Cubes are made of needled rock mineral wool. Green Flocks are used as a growing medium for the professional cultivation of plants or as a high quality additive used to improve soil and save water in a variety of different landscaping applications.

Urbanscape® landscaping and landscape-shaping materials are made from natural, locally sourced volcanic rock. Rock mineral fibres are produced in a heating process entirely without any chemical binders and have superior water storage and release capabilities that make water and nutrients easily accessible to plants. This in turn improves soil structure and reduces environmental stress on plants.



Applications

Mixing evenly with soil or any other growing media improves water retention capacity and aeration.

Where to use it

- Landscaping applications (planting pits, garden beds)
- Containers
- Pots

Why

- Improves soil/substrate characteristics
- Reduces environmental stress on plants
- Delivers better plant growth and roots' development
- Produces more vigorous and resistant plants
- Improves soil tilth (soil becomes loose and fluffy)

Benefits



High water absorption



Reduced irrigation frequency



Reduced fertilizer consumption



Improved root growth



Stronger plants



Efficient installation



Sustainability



Improved water air ratio

KNAUFINSULATION

urbanscape®

Above and beyond

Technical Properties of Urbanscape® Green Cubes

Characteristic	Unit	Value	Standard
Specific weight	kg/m ³ (lb/ft ³)	110 (6.87)	
Ignition loos	%wt	max. 0.2	6
Fibre diameter	µm (µin)	approx. 4.5 (177)	SK_109
Cube size	mm (in)	20 × 20 × 20 (0.8 × 0.8 × 0.8)	
Colour		Grey/Green	
pH (CaCl ₂)		7.5	
Initial water absorption*	times	7	

*The ratio of the weight of water absorbed by a material to the weight of the dry material.
 Certificates: EUCED, RAL, ISO 9001, ISO 14001, OHSAS 18001

Usage / Installation

- Mix with any substrate or other growing media to improve water retention capacity and aeration. Water in the planting container is evenly distributed and intervals between watering are longer.
- Mix into sandy or loamy soil to improve soil aeration and water distribution. Water is easily available for plant uptake.
- We recommend mixing at least 20% of Green Flocks into the growing medium.
- The more you add, the better results are achieved.

1. Simple to use

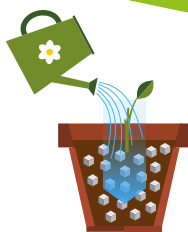


Mix Green Cubes with the substrate at a ratio of 1:5 (1/5 cubes with 4/5 substrate). The proportion of cubes can be increased when planting plants with more demanding water requirements.

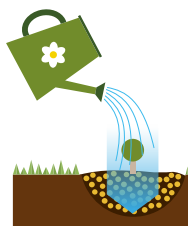


Prepare the planting pit. Mix Green Cubes with the field soil or purpose substrate at a ratio of 1:5 (1/5 cubes mixed with 4/5 substrate).

2. Usual care



Place the mixture in a pot. Place the plant in the ready-made mixture and water thoroughly. The cubes should be covered with soil.

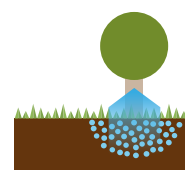


Plant shrubs and trees, cover all exposed roots with the mixture and water well. Cubes should be covered with a layer of soil to prevent the evaporation.

3. Less watering



Green Cubes retain additional water so that the plant may access it as required.



Green Cubes retain additional water thus that the shrubs and trees may access it as required.

Recommendations

By adding the Urbanscape green cubes to the soil you achieve:

- better growing medium characteristics
- less environmental stress on the plants
- better plant growth
- better plant vigour & resistance

Especially recommended for outdoor growing. Mixing regular soil with Urbanscape Green Cubes improves soil structure and produces higher yields. At the same time watering frequency can be reduced by up

to 50%. Results may vary due to the type of soil, vegetation and climatic conditions. It is recommended to mix at least 20% of Green Cubes into regular soil or substrate. The more cubes you add, the better results are achieved.

Packaging of Urbanscape® Green Cubes

Product	pallet size	weight/pallet	pallet/cont (HC 40ft)	Btto weight /cont (HC 40ft)	pallet/truck (44.6ft)	Btto weight/ truck (44.6ft)
Green Cubes D11 (425445)	1280 × 1040 × 1250 mm	125 kg	40	5.000 kg	46	5.750 kg
	4.2 × 3.4 × 4.1 ft	275 lb	40	11.023 lb	46	12.676 lb

*Also available in retail packaging